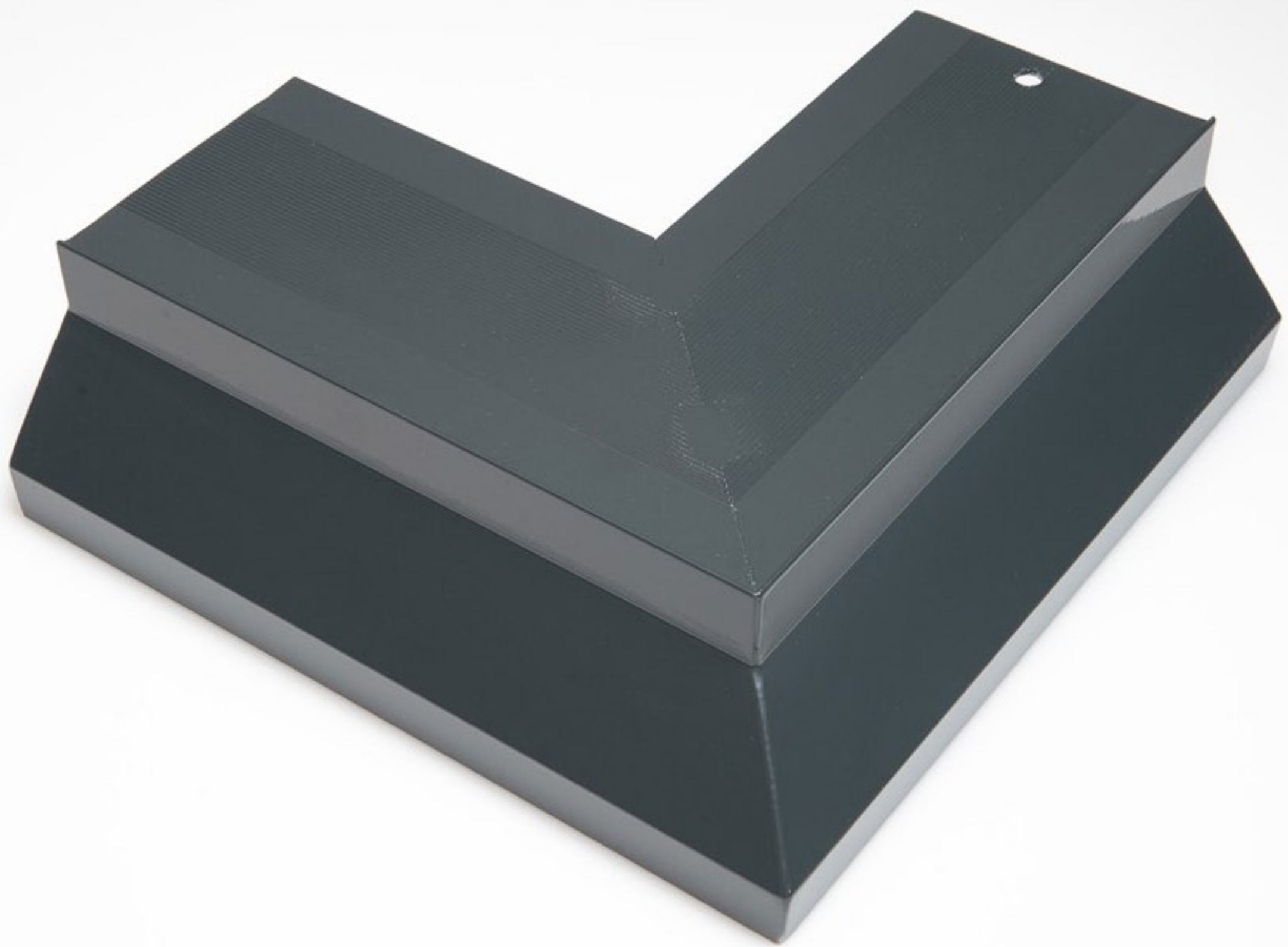


A close-up photograph showing a black metal TBO profile being attached to a wooden surface. The profile has a complex, multi-faceted design with several rectangular cutouts on its top surface. The wood grain is clearly visible on the surface being covered. A watermark 'www.gama2.pl' is overlaid on the image.

[www.gama2.pl](http://www.gama2.pl)

#### **PROFIL TBO**

Profil czolowy TBO,  
wykonany ze stali  
lub stopu aluminium.





A close-up photograph showing a black, U-shaped aluminum profile being fitted onto a wooden surface. The profile is partially inserted into a pre-cut slot in the wood. The background is blurred, showing more of the wooden surface and the profile's length.

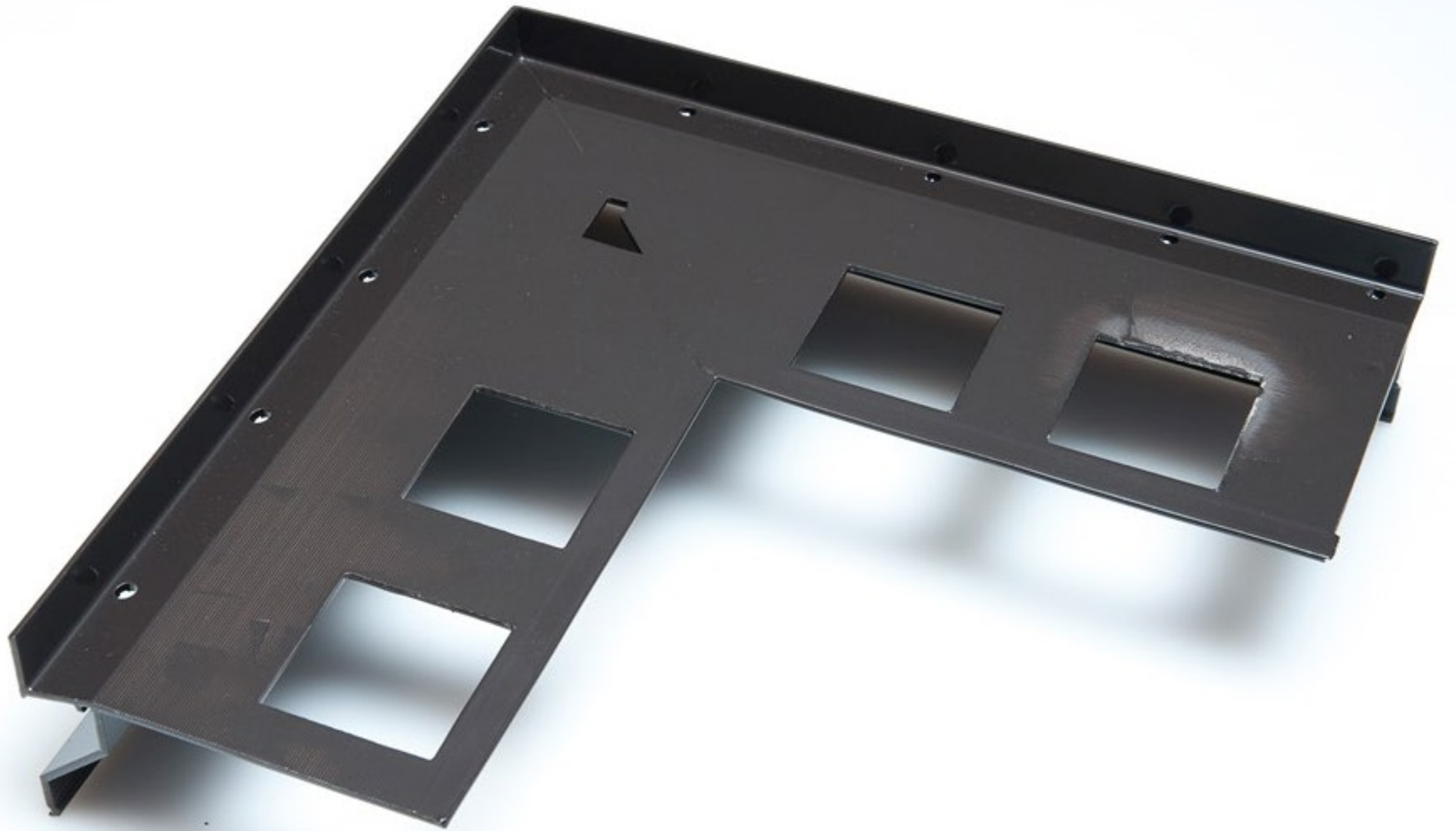
[www.gama2.pl](http://www.gama2.pl)

**PROFIL TRD**

Profil czolowy TRD,  
wykonany  
ze stopu aluminium.









[www.gama2.pl](http://www.gama2.pl)

#### PROFIL TRT

Profil boczny TRT,  
wykonany  
ze stopu aluminium

